

**THE ROYAL HIGHLAND SHOW**  
FOR A GREAT DAY - GO OUT - YOU CAN'T LICK IT SO DON'T MISS IT!

**THURSDAY 19 JUNE**  
Barn - 6pm

**FRIDAY 20 JUNE**  
Barn - 7pm

**SATURDAY 21 JUNE**  
Barn - 7pm

**SUNDAY 22 JUNE**  
Barn - 5pm

Major Sponsor  
**The Royal Bank of Scotland**

Information Hotline  
**0891 884 514**

Ingliston  
Edinburgh

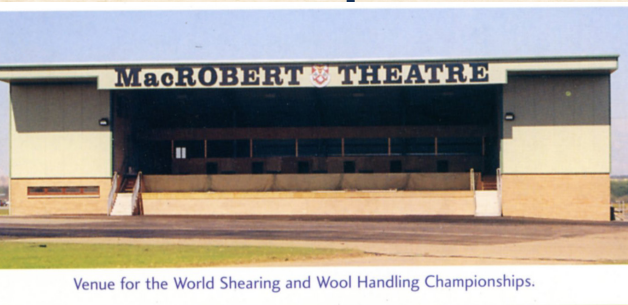
Aerial view of the 2019 Royal Highland Show, the last in-person event before the pandemic and the largest ever held.



Work finishes on the new Members Pavilion overlooking the Main Ring in March 2020.



1997 ► 2003 ► 2008 ► 2019 ► 2020 ► 2021



Venue for the World Shearing and Wool Handling Championships.



Celebrating the Clydesdale at the 2019 show.



The Royal Highland Showcase 2021 goes online, streaming live over 7 days in June.

**GOLDEN SHEARS WORLD CHAMPIONSHIPS**

**Grand Welcome Dinner**

on Thursday 19 June 2003

in the President's Marquee

at 7 for 7.30pm

HRH Princess Royal attends the 2008 Royal Highland Show accompanied by Jim Gammie, chief cattle steward.

## RHASS Bicentennial Fund

Very few modern organisations can trace their heritage back to 1784. Even fewer can say they have remained true to their founders' values and beliefs. Yet this is the case for The Royal Highland and Agricultural Society of Scotland (RHASS).

RHASS is a unique organisation and remains as focused on delivering its objectives today as it was when it was founded well over 200 years ago.

This June is another momentous day in our long history and will see us marking the 200th anniversary of our first Royal Highland Show which was held at Edinburgh's Canongate in 1822.

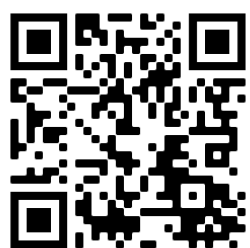
Through OUR Show, RHASS has been the backbone of the rural community in Scotland for generations. For 4 days of the year, the Royal Highland Show helps us all combat the difficulties of rural living by offering community, support and friendship. It gives us the opportunity to re-engage with friends and acquaintances, something which we all need more than ever today.

Living and working in rural areas has never been easy, and today's political and environmental changes, alongside the global pandemic, are bringing new complexities to how we live and work. Our communities and the industry need our support to live and work the land that we have loved for generations.

The 200th anniversary of OUR show is OUR opportunity to choose the next path on our journey and to help support this we would like to establish the **RHASS Bicentennial Fund** with the purpose of helping those who live, work and breathe rural life overcome these challenges. The Bicentennial Fund will also help people progress opportunities and help take Scottish Agriculture through the next 200 years funding initiatives around learning, collaboration, addressing climate change and innovation.

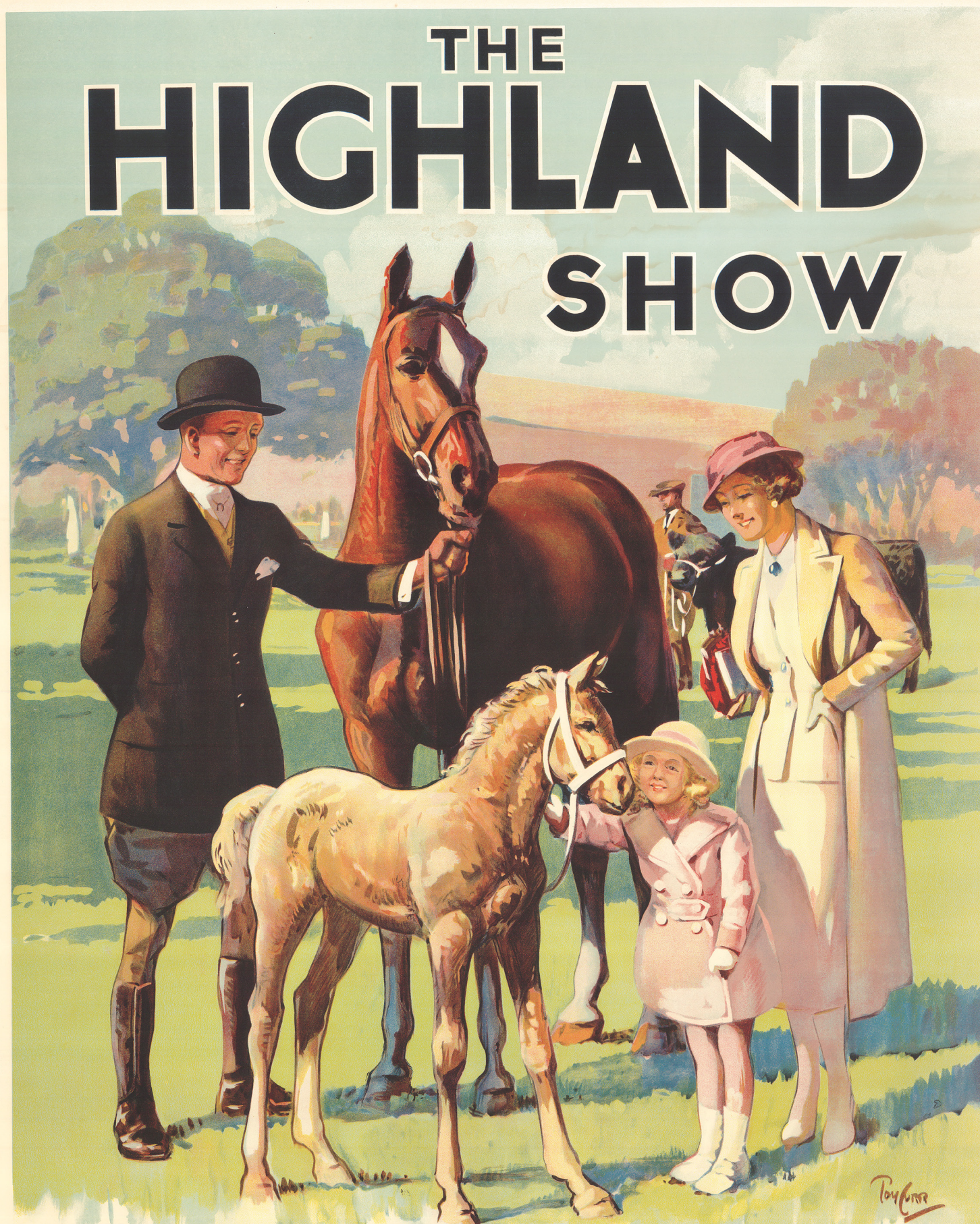
We would like this to be a project that the whole RHASS community can support, no matter what their circumstances or stage in life. By coming together we can make a real difference to OUR community.

As we look forward, we believe that there is no better time to build on our legacy, through the establishment of this new fund.



**SCAN THE CODE TO DONATE**

OR VISIT  
[WWW.RHASS.ORG.UK/DONATE](http://WWW.RHASS.ORG.UK/DONATE)



**1822 - 2022**  
CELEBRATING 200 YEARS OF SHOWCASING THE BEST OF FOOD, FARMING AND RURAL LIFE

► COMMEMORATIVE PULL OUT TIMELINE ►

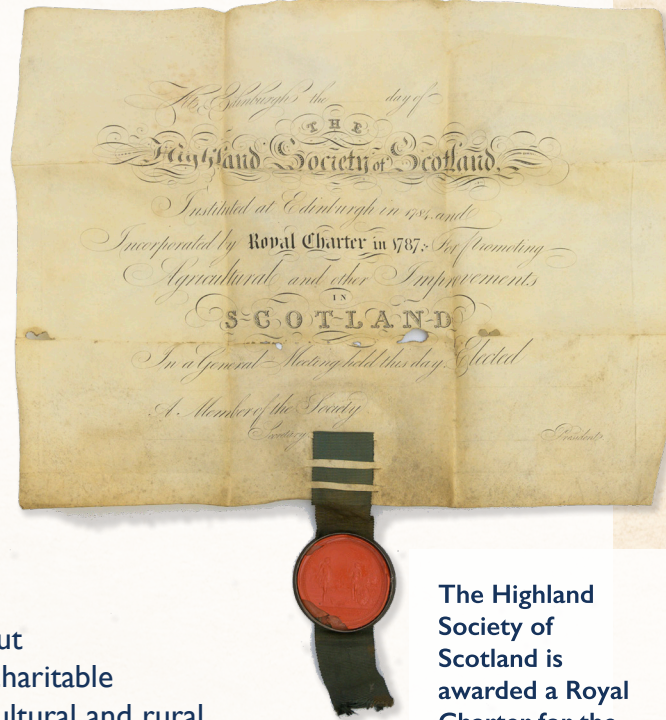
The very first Highland Show was held in 1822, on the grounds of Queensberry House in Edinburgh's Canongate. This special pull-out timeline charts the Show's humble beginnings right up till the present day, using never-before-seen images and documents from the RHASS archives.

Over the last 200 years, a lot has changed (not least a Royal Charter) but the purpose of the Show remains the same – to put a spotlight on the very best of Scotland's food, farming and rural life.

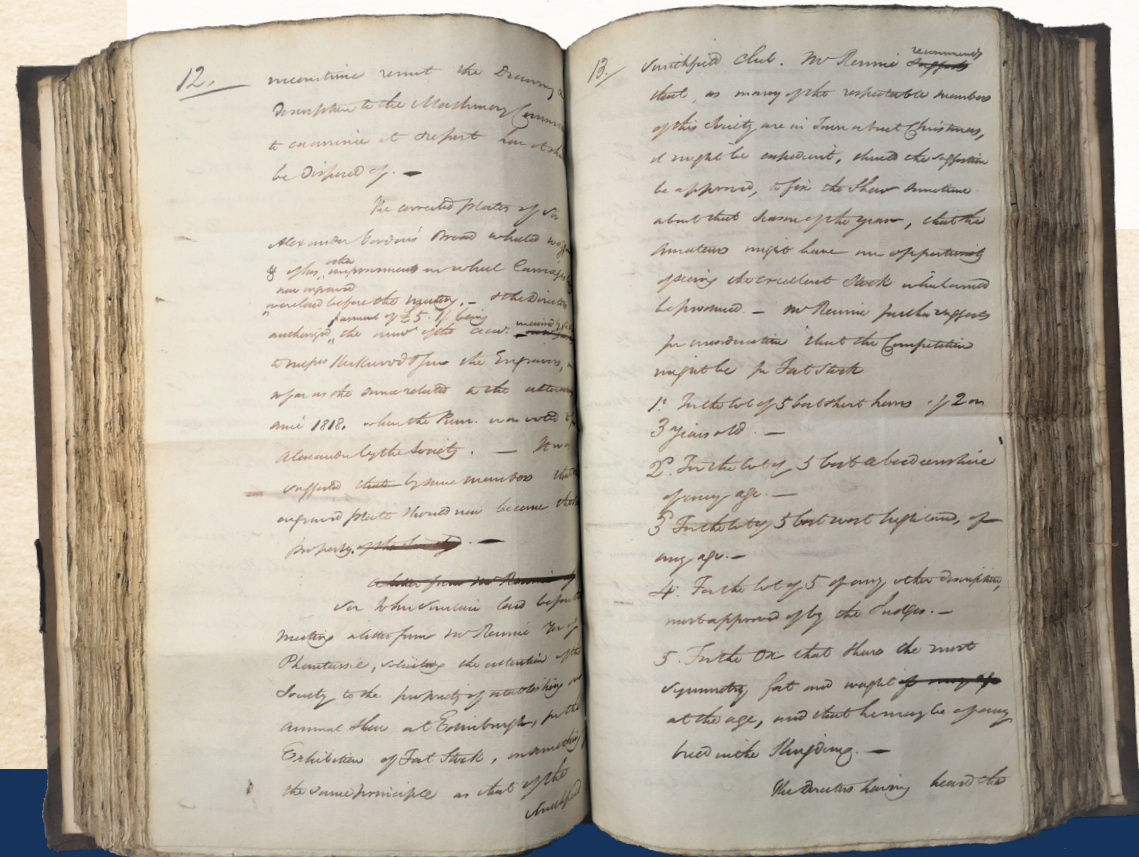
The impact and influence of the Show on the sector is vast – not only economically, but culturally. It's a vital part of achieving RHASS' charitable remit, promoting the role of Scotland's agricultural and rural industries to society at large. It helps drive innovation in the sector too, through Technical Innovation Awards and fostering the sharing of new ideas and best practice.

Of course, our members are the backbone of RHASS – they also create the community of the Royal Highland Show. Without you, we would not have a Show, so we'd also like to take this opportunity to thank you for your unwavering support.

As we look back on the last two centuries with pride, we also look forward to the next two and beyond with ambition – we will see you in 2022 for a truly special Royal Highland Show!

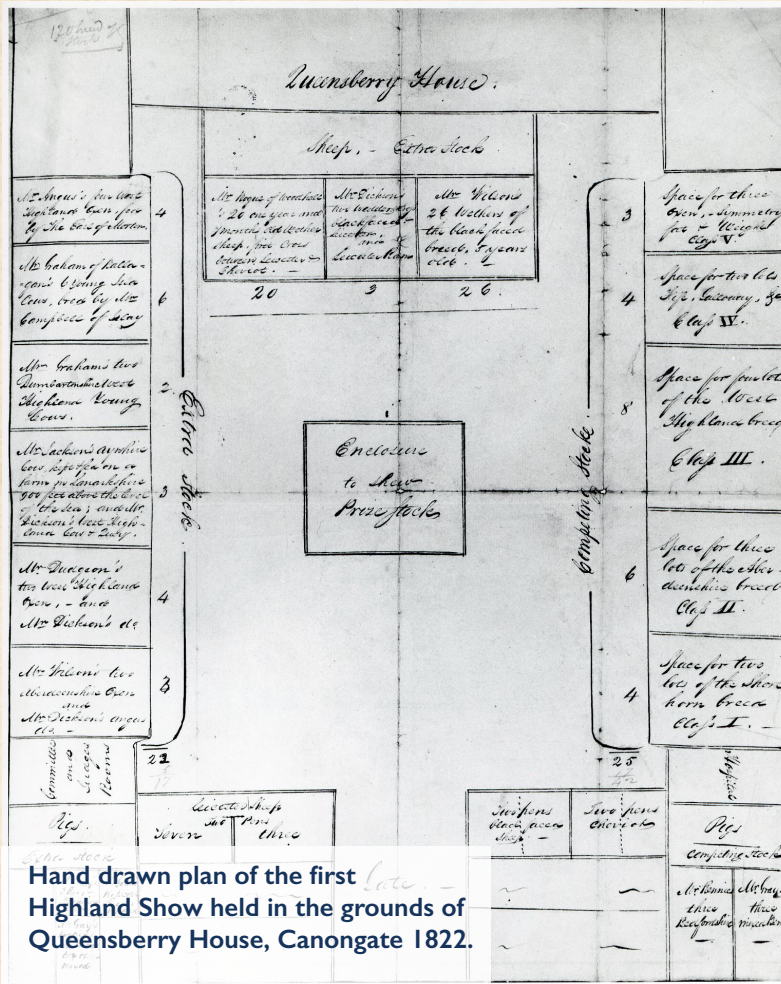


The Highland Society of Scotland is awarded a Royal Charter for the promotion of Agriculture, 1787.

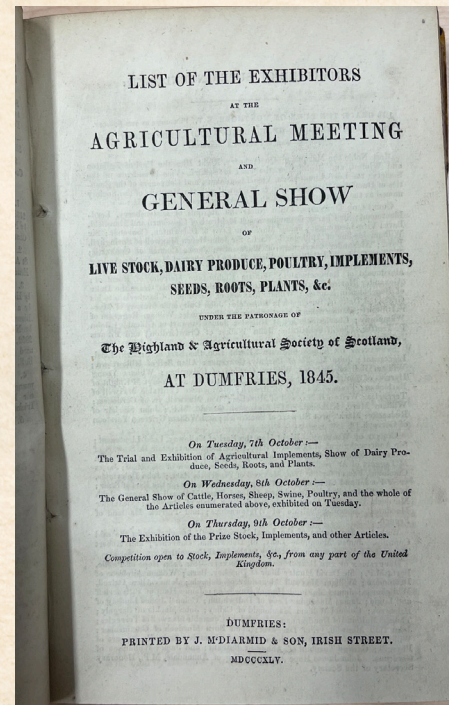


First mention of 'General Show' in hand-written minutes from meetings of the Royal Highland Society, 1821.

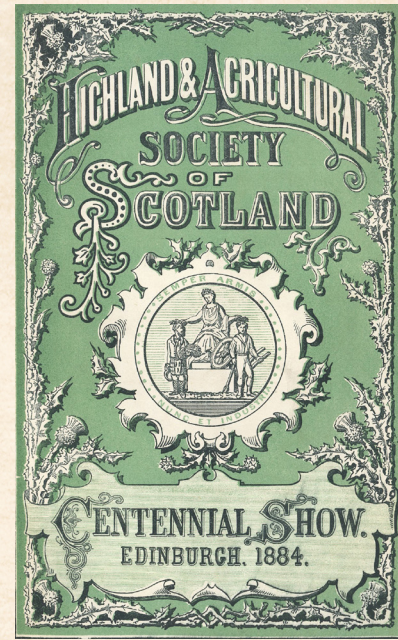




Hand drawn plan of the first Highland Show held in the grounds of Queensberry House, Canongate 1822.



List of Exhibitors from the Highland Show in Dumfries, 1845.



Schedule from the Centennial Highland Show, commemorating 100 years since the formation of the Society, 1884.



Alloa Highland Show Poster, 1929

Following a Royal visit to the 1948 show at Inverness, King George VI grants warrant for 'Royal' to be added to the title of the Highland Show.



The Royal Party attend the Highland Show in Dundee, 1933



Ingliston Estate purchased in 1960. (Photo - Ingliston House 1930)

HRH Queen Elizabeth II becomes Patron of the Royal Highland & Agricultural Society of Scotland, 1952.



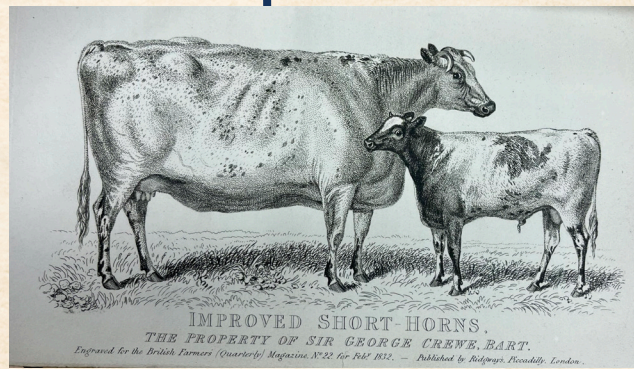
Second prize in the photography competition 1977 titled 'CHARGE'.



Prince Philip visits the Show, 1990.



Painting of Sir John Sinclair by Raeburn, member and sometime President of the Highland Society, 1795



Balmoral. November 13. 1975.

My dear Mr. Steel,

I have to thank you very much for your coming, playing so promptly with the request I had the honour of addressing to you in the name of Her Majesty. The pictures arrived in safety and were at once submitted to the Queen's inspection after the return from the Glenside Hotel. The Queen took much interest in every one of them, but what she liked most - was the water-coloured portrait of the elderly High-lander - and in a frame.



Her Majesty thought this portrait most characteristic and Com- manded me to ask you how long it would take you to paint two portraits in this sketchy style and what price you would charge for them.

To avoid all mixing up, I have tried to single out, by my feeble work, the portrait to which my queries refer (on Brown Paper). I trust you will forgive my more than hazy attempt.

The picture has been directed to return the pictures immediately. Believe me Yours cordially, R. Gourley Steel

Letter between Balmoral Estate and Gourley Steel, official painter of animals for Queen Victoria 1875,



Scenes from the 1929 Highland Show, Alloa.



The Royal Party at the Edinburgh Highland Show, Prestonfield 1899



Aerial view of the Dundee Highland Show, 1949

American Cooks Helped At 'Highland' Barbecue. Five American mess sergeants from the United States Air Force base at Kirkcubbin "slaved over a hot stove" in company with other white-coated chefs from Scotland and England at Corstorphine, Edinburgh, last night to make the Royal Highland Show's first-ever barbecue a "rip-roaring" success.



Telephone exchange at the 1959 Inverness Show.



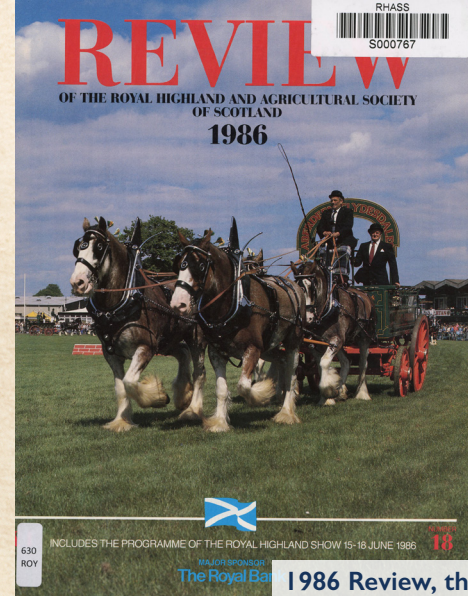
HRH Queen Elizabeth II, John C Wallace Man, CBE Chairman of RHASS Board of Directors 1959 - 1960 & Prince Philip Duke of Edinburgh enjoy an event in the Main Ring at Ingliston, 1960.



Handcrafts at work at the 1985 Show



The Queen Mother inspects the Royal Canadian Mounted Guard at Ingliston 1977



1986 Review, the precursor to today's Society Magazine

1822 1832 1845 1875 1884 1899 1929 1933 1949 1952 1957 1959 1960 1966 1970 1977 1985 1990